

## CASE STUDY

# Noatum Logistics

Sector: Commercial  
Services: CCTV, Access Control, Intruder Alarm  
Noatum Logistics, Unit 1B LondonMedway, Rochester, Kent

# Noatum Logistics



## Client Requirement

Design advice and implementation of security systems for a new build distribution centre. Ongoing monitoring and maintenance services

## The Problem

Based on experience in other premises, the client foresaw various critical areas requiring addressing:

- Potential for break ins at the relatively remote site
- Need to assure 3PL clients of **safety of stock** especially in picking areas
- **Health and safety** issues for operatives in warehouse, yard and loading docks
- Need to **control access** to various parts the buildings, manage visitors and clients with on site office staff
- An efficient and failsafe way of logging arrival and departure of shift workers to **calculate payroll**

## The Anchor Solution

Texcom *Elite* **perimeter** security intruder alarm with monitoring.

*Excel* **fibre solution** for distribution to data hubs in the large warehouse building to avoid extending cat 6 cable lengths beyond best practice.

Logisticoms *Focal* **CCTV surveillance** system outside buildings with required CCTV masts, including ground works. Further CCTV cameras inside the building also on the main system with *NX Witness* **video management** platform and viewing display screen solutions. Extra assurance for Noatum's 3PL clients by building in extra hard drive capacity allowing CCTV recording to be available for 90 days.

Logisticoms *Angle-lok* **bracketry** to ensure adequate view of lorry loading in particular high value bays, 360 degree ceiling mounted cameras to reduce the overall amount of cameras needed.

*Paxton Entry* system for welcoming and control of visitors., including security barrier integration and **video door entry intercoms**. Twin height intercoms for cars and freight transport.

*Paxton Net2* **access control** and *RotaOne* **time & attendance**, coupled to *ievo* **biometric readers** to avoid the system failing because of lost/ borrowed tokens or cards. Audible and visible break glass alerts to prevent tampering.

Colour matched CCTV hardware: The brand new building façade aesthetics were carefully preserved by RAL **colour matching the CCTV cameras** to the various shades of cladding finish – see image 5 opposite.

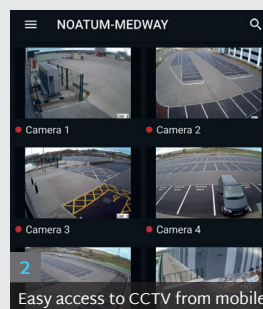
**Project value** £132K including civils and network infrastructure.

## Summary

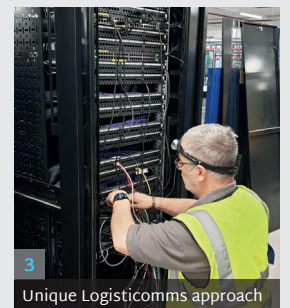
Nick Hawkins for Noatum Logistics, used the following words in his review: "...a comprehensive integrated security solution. Anthony & Gordon have worked closely with our Operations Team to respond to changing requirements and delivered a great service".



1 Noatum opened their new ePoint warehouse in 2021



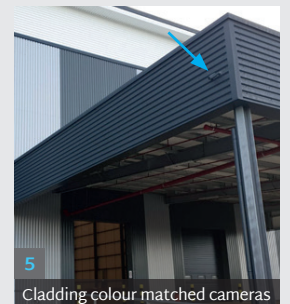
2 Easy access to CCTV from mobile



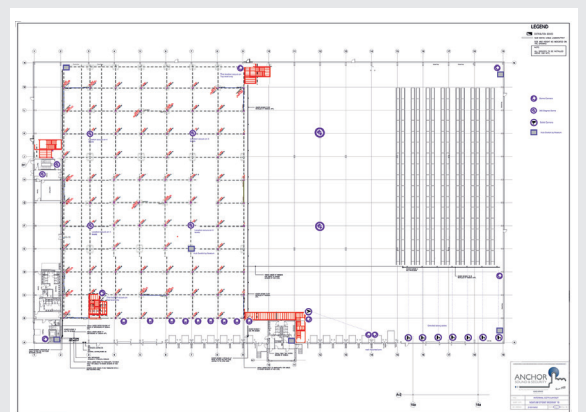
3 Unique Logisticoms approach



4 Full enablement works and civils



5 Cladding colour matched cameras



6 Logisticoms planning service with accurate scaled drawings at A1

